



22nd

ROYAL LANGKAWI INTERNATIONAL REGATTA

19 - 24 JAN 2026



Attachment B

Race Areas and Courses

WEST COAST HARBOUR RACES

EAST COAST & AROUND THE ISLAND

START AREA FOR
COASTAL COURSES
AND AROUND ISLAND

Warning (Reported Wreck)
06°13.725'N 099°52.953'E
Unmarked Wreck - Superstructure
visible above the water

Warning (SY Phoece) 06°14.20'N 099°45.61'E

A 75m, 4 mast mega yacht caught fire and sank
in 8m at location "Wreck"
Mast may still be visible above the water and is
marked by East and West Cardinal Buoys
marking its location.

Illustrations are purely diagrammatic and should not
be used for navigation.

While every effort is made to ensure that navigation buoys
are depicted in their proper places, no responsibility is
taken for any errors thereon.

If there is any discrepancy between a course diagram
and the written description, then the written description
shall prevail.

The diagrams show the courses, the order in which the
marks are to be passed or rounded, and the side on which
each mark is to be left.

Around the Island

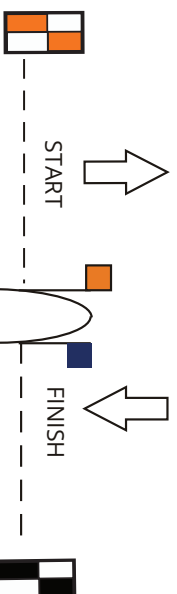
RLIR
22nd
ROYAL LANGKAWI
INTERNATIONAL REGATTA
19 - 24 JAN 2026
Windward/Leeward and Coastal Courses

W



2

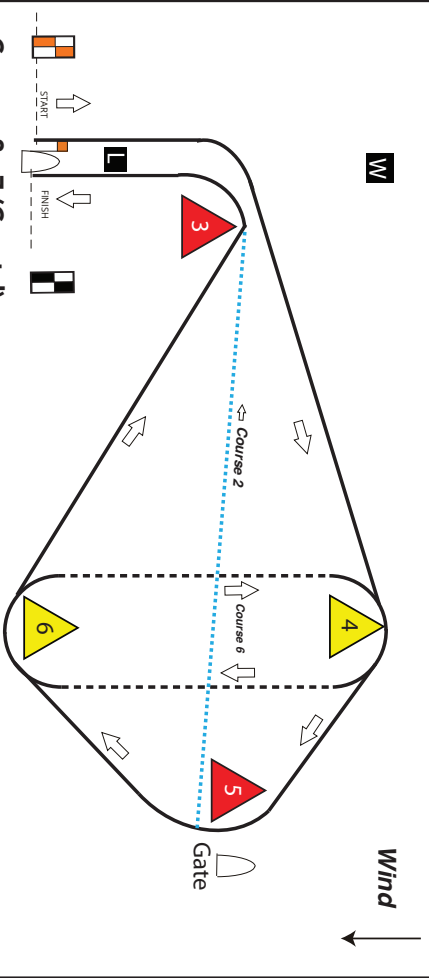
L



Course 1

- i W, Finish
- ii W,L,W, Finish
- iii W,L,W,L,W, Finish
- iv 1, Finish
- v 1,L,1, Finish
- vi 1,L,1,2,L,1, Finish
- vii 1,2, Finish
- viii 1,2,L,1,2, Finish
- ix 1,2,L,1,L,1,2, Finish

All Marks Rounded to Port.



Courses 2 - 7 (Coastal)

Direction of Marks (all courses):

Pass through Gate with Committee Vessel to Starboard

- Course 2: Start - 3(S) - 4(S) - 5(Gate) - 3(P) - Finish
- Course 3: Start - 3(S) - 4(S) - 3(P) - Finish
- Course 4: Start - 3(S) - 4(S) - 6(S) - 3(P) - Finish
- Course 5: Start - 3(S) - 4(S) - 5(Gate) - 6(S) - 3(P) - Finish
- Course 6: Start - 3(S) - 4(S) - 5(Gate) - 6(S) - 4(S) - 3(P) - Finish
- Course 7: Start - 3(S) - 5(S) - Finish

A description of actual buoy shapes and colours used on an individual race course will be announced by VHF with the course announcement.

Courses 8 - 12 (Coastal)

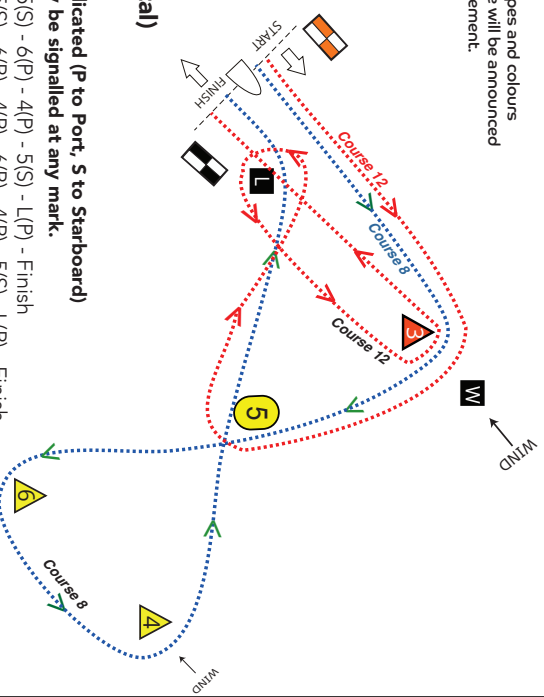
Direction of Marks (all courses):

Pass or Round Marks as indicated (P to Port, S to Starboard)

Note: Shorten Courses may be signalled at any mark.

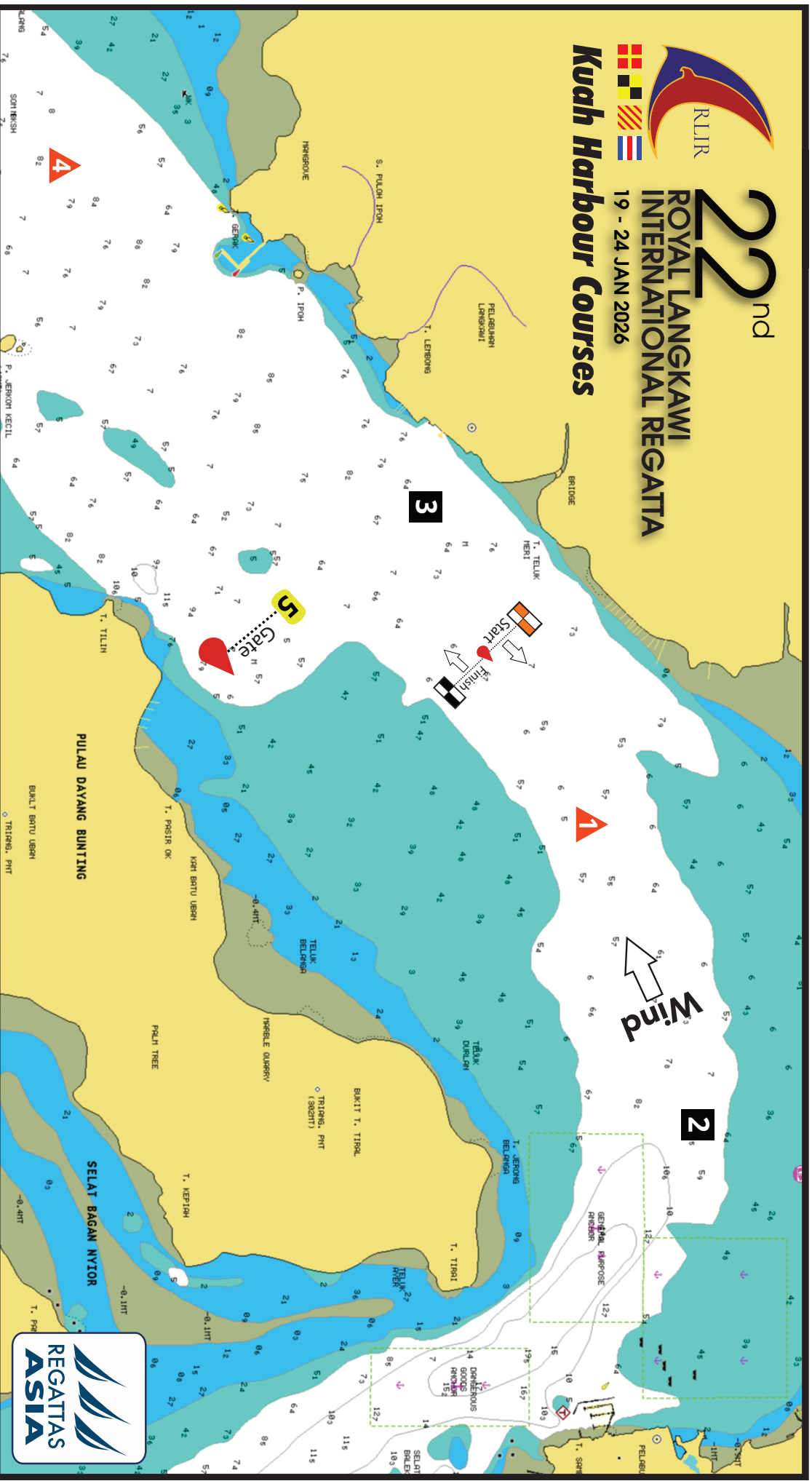
- Course 8: Start - 3(S) - 5(S) - 6(P) - 4(P) - 5(S) - L(P) - Finish
- Course 9: Start - 3(S) - 5(S) - 6(P) - 4(P) - 6(P) - 4(P) - 5(S) - L(P) - Finish
- Course 10: Start - 3(S) - 5(S) - 6(P) - 5(S) - L(P) - Finish
- Course 11: Start - 3(S) - 5(S) - 6(P) - 4(P) - 5(S) - 3(P) - Finish
- Course 12: Start - 3(S) - 5(S) - Round L(P) - 3(P) - Finish

(Courses 8 and 12 are shown for illustration only)





Kuah Harbour Courses



Start, 1-p, 4-p, 3-p, 4-p, 5-g, 1-p, Finish

Start, 1-p, 4-p, 5-g, 1-p, Finish

Start, 4-p, 5-g, 1-p, Finish

Start, 1-p, 4-g, 5-g, 2-p, Finish

Start, 1-p, 3-p, 5-g, 1-p, Finish

Start, 2-p, 4-p, 3-p, 4-p, 2-p, Finish

Start, 2-p, 4-p, 2-p, Finish

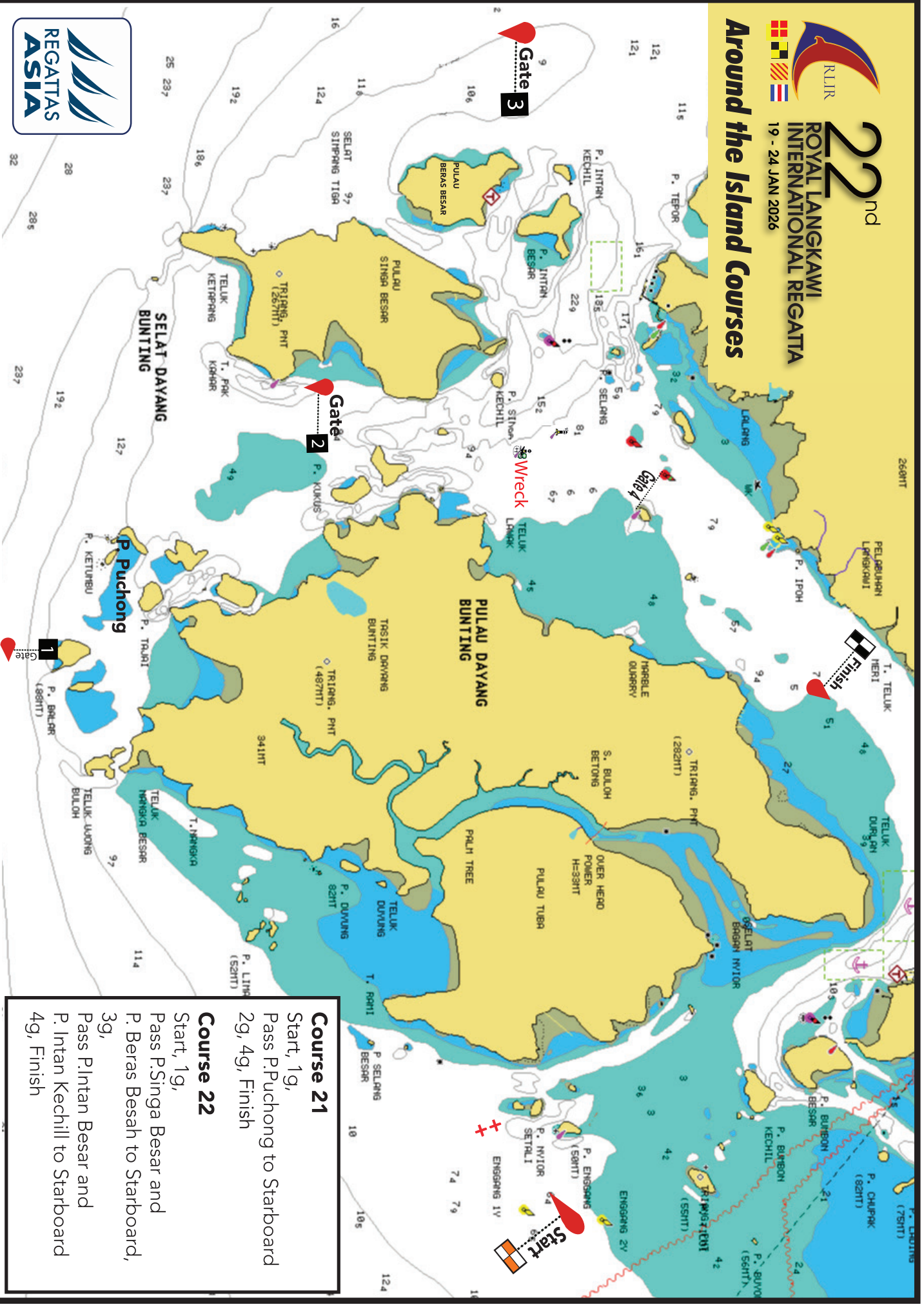
A description of actual buoy shapes and colours used on an individual race course will be announced by VHF with the course announcement.

Note: Position of start, mark boat and mark buoys are in estimated positions for illustration only.





Around the Island Courses

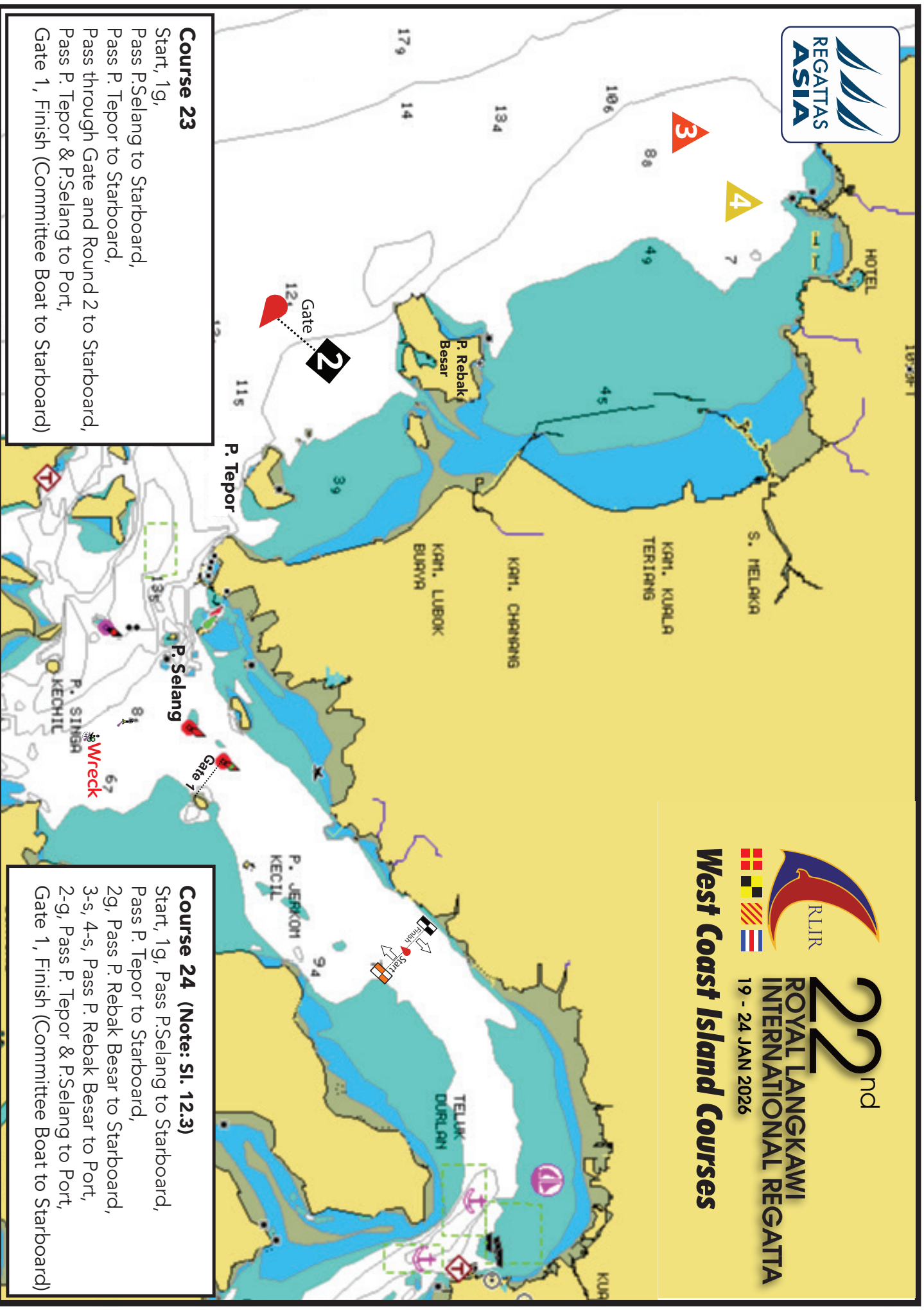


Course 21

Start, 1g,
Pass P.Puchong to Starboard
2g, 4g, Finish

Course 22

Start, 1g,
Pass P.Singa Besar and
P. Beras Besar to Starboard,
3g,
Pass P.Intan Besar and
P. Intan Kechill to Starboard
4g, Finish



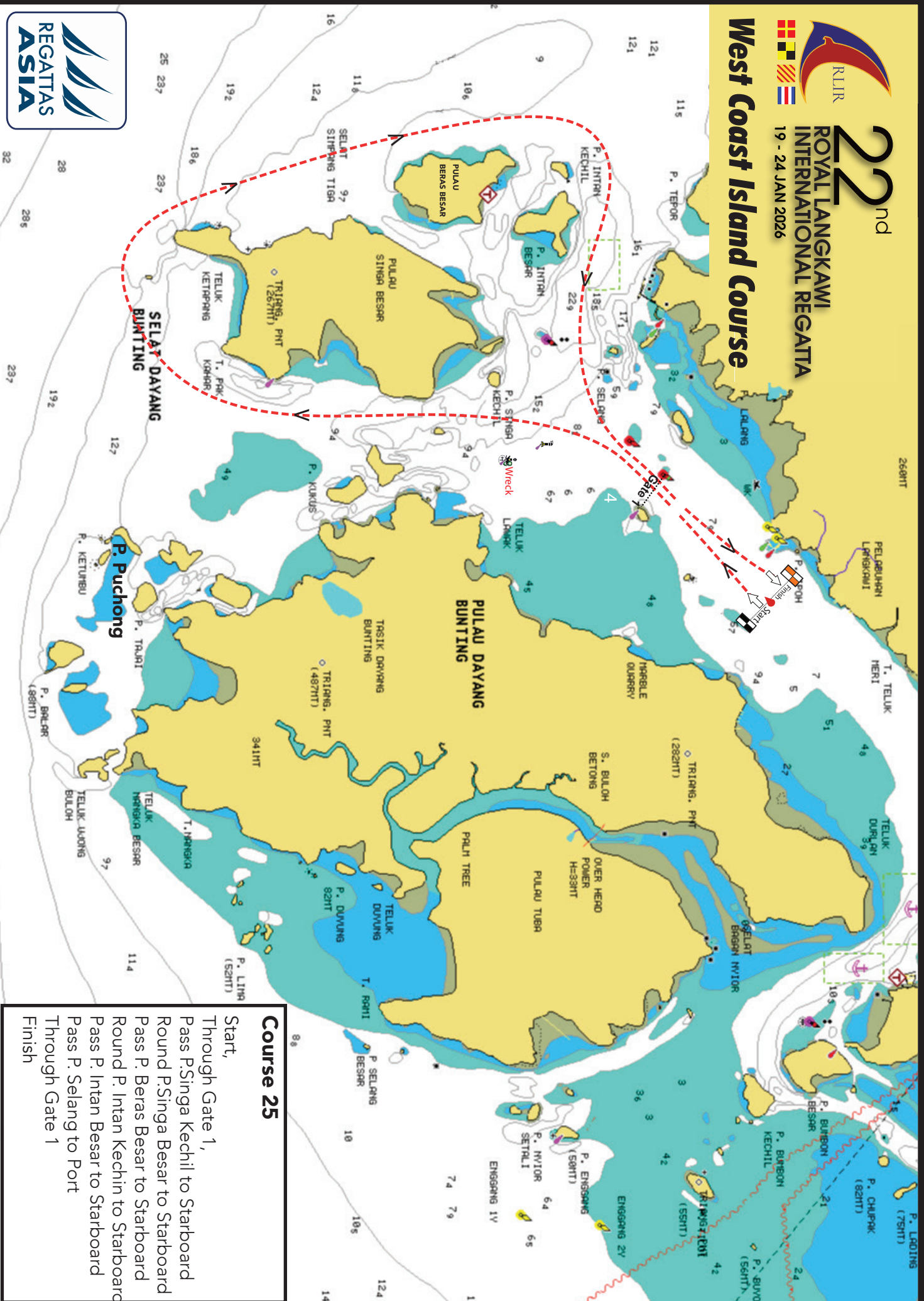


22nd

ROYAL LANGKAWI INTERNATIONAL REGATTA

19 - 24 JAN 2026

West Coast Island Course



Course 25

Start,
Through Gate 1,
Pass P. Singa Kechil to Starboard
Round P. Singa Besar to Starboard
Pass P. Berau Besar to Starboard
Round P. Intan Kechil to Starboard
Pass P. Intan Besar to Starboard
Pass P. Selang to Port
Through Gate 1
Finish



Gate 1, Finish (Committee Boat to Starboard)

Finish (Committee Boat to Starboard)

Finish (Committee Boat to Starboard)

Jerkom 2 Buoy N06 15.64' E99 45.88'

N06° 14.20' E99° 45.61'



**ROYAL LANGKAWI
INTERNATIONAL REGATTA**

19 - 24 JAN 2026

West Coast Island Courses



22nd ROYAL LANGKAWI INTERNATIONAL REGATTA

19 - 24 JAN 2026

ATTACHMENT C – GPS Location of Marks and Islands

Courses 21 and 22

Depending on sea and wind conditions, the Start Vessel, Marks and Gates will be in the approximate vicinity of:

Start Boat	-	N06°14.7' - E99°53.4'
Gate 1	-	N06°09.1' - E99°47.9'
Gate 2	-	N06°12.0' - E99°45.2'
Gate 3	-	N06°14.5' - E99°42.5'
Gate 4	-	Pass between Jerkom 2 N06°15.64' - E99°45.88' and P.Jerkom Besar N06°15.42' - E99°46.29'
Finish Boat	-	In a North East direction from Gate 4.

Courses 23 - 28

Depending on sea and wind conditions, the Start Vessel, Marks and Gates will be in the approximate vicinity of:

Start/ Finish	-	N06°17.85' - E99°48.65'
Gate 1	-	Pass between Jerkom 2 N06°15.64' - E99°45.88' and P.Jerkom Besar N06°15.42' - E99°46.29'
Gate 2	-	N06°16.80' - E99°41.40'
Mark 3	-	N06°20.05' - E99°38.80'
Mark 4	-	2 Nm upwind from Mark 3

If Mark 3 and 4 are used, Gate 2 will maintain position.

If a race committee vessel at 2-g displays flags black over red, DELETE marks 3 and 4 from Course Description, ROUND MARK 2 to STARBOARD and continue with course.

Essential Co-ordinates

P. Singa Kechil	N06° 13.90' E99° 44.90'
P. Jong	N06° 13.40' E99° 42.40'
P. Intan Besar	N06° 13.93' E99° 43.60'
P. Intan Kechil	N06° 14.60' E99° 42.80'
P. Selang (Reef)	N06° 14.90' E99° 44.90'
P. Jerkom Besar	N06° 15.42' E99° 46.29'
Jerkom 2 Buoy	N06° 15.64' E99° 45.88'
Wreck	N06° 14.20' E99° 45.61'

Reported Wrecks

Warning (SY Phoea) **06°14.20'N 099°45.61'E**
A 75m, 4 mast mega yacht caught fire and sank in 8m at location "**Wreck**"
Mast may still be visible above the water and is marked by East and West Cardinal Buoys marking its location.

Warning (Reported Wreck)
06°13.725'N 099°52.953'E
Unmarked Wreck - Superstructure visible above the water

The GPS details included in the course descriptions are provided using the **WGS84** datum.

These details are approximate and no request for redress will be considered for a minor deviation of position. This changes RRS 61.1.