

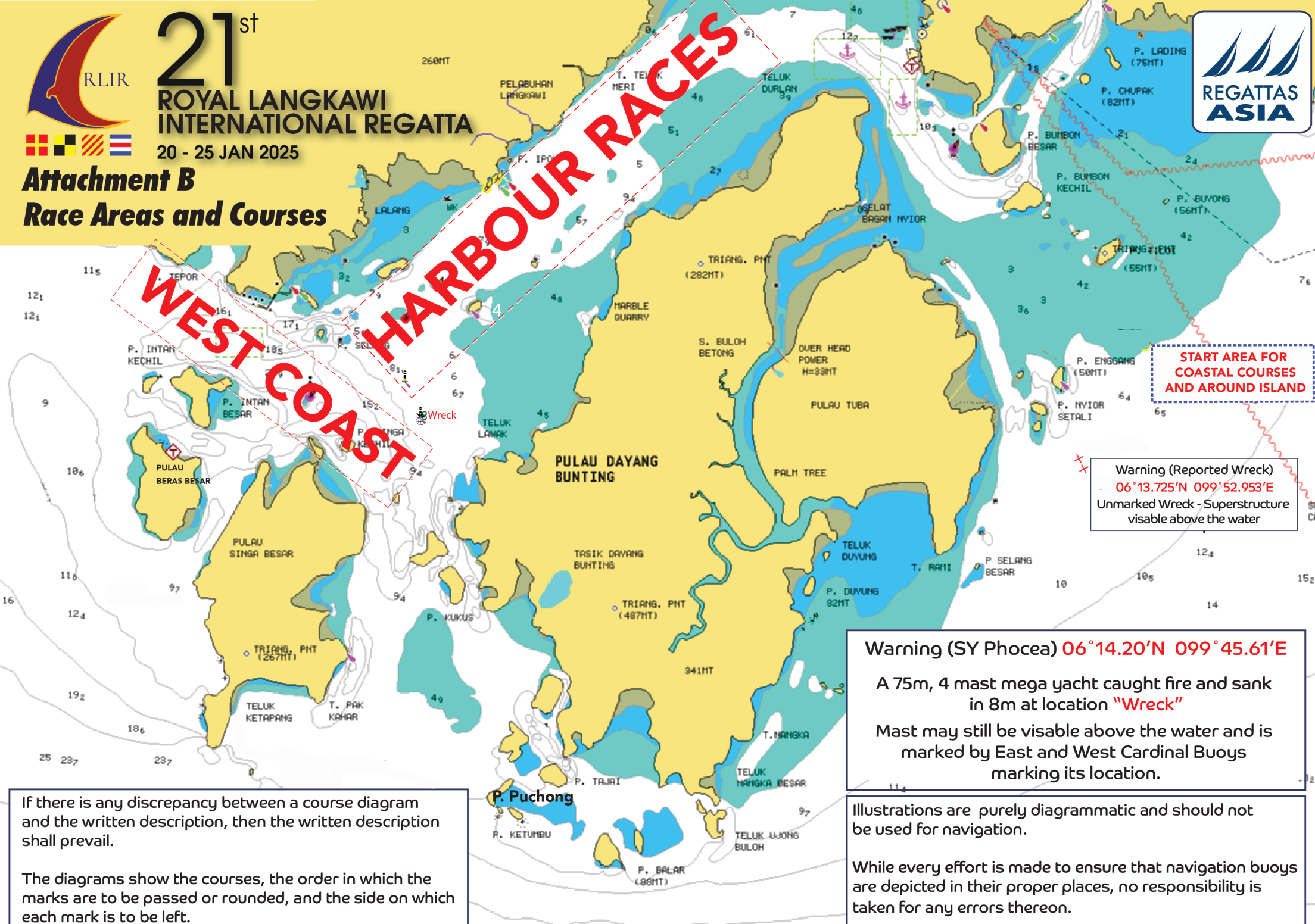


# 21<sup>st</sup>

## ROYAL LANGKAWI INTERNATIONAL REGATTA

20 - 25 JAN 2025

### Attachment B Race Areas and Courses



# WEST COAST HARBOUR RACES

START AREA FOR COASTAL COURSES AND AROUND ISLAND

Warning (Reported Wreck)  
06°13.725'N 099°52.953'E  
Unmarked Wreck - Superstructure visible above the water

Warning (SY Phoccea) 06°14.20'N 099°45.61'E  
A 75m, 4 mast mega yacht caught fire and sank in 8m at location "Wreck"  
Mast may still be visible above the water and is marked by East and West Cardinal Buoys marking its location.

If there is any discrepancy between a course diagram and the written description, then the written description shall prevail.

The diagrams show the courses, the order in which the marks are to be passed or rounded, and the side on which each mark is to be left.

Illustrations are purely diagrammatic and should not be used for navigation.  
While every effort is made to ensure that navigation buoys are depicted in their proper places, no responsibility is taken for any errors thereon.



# 21<sup>st</sup> ROYAL LANGKAWI INTERNATIONAL REGATTA

20 - 25 JAN 2025

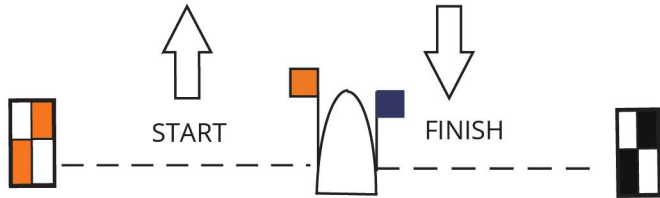
## Windward/Leeward and Coastal Courses

W



2

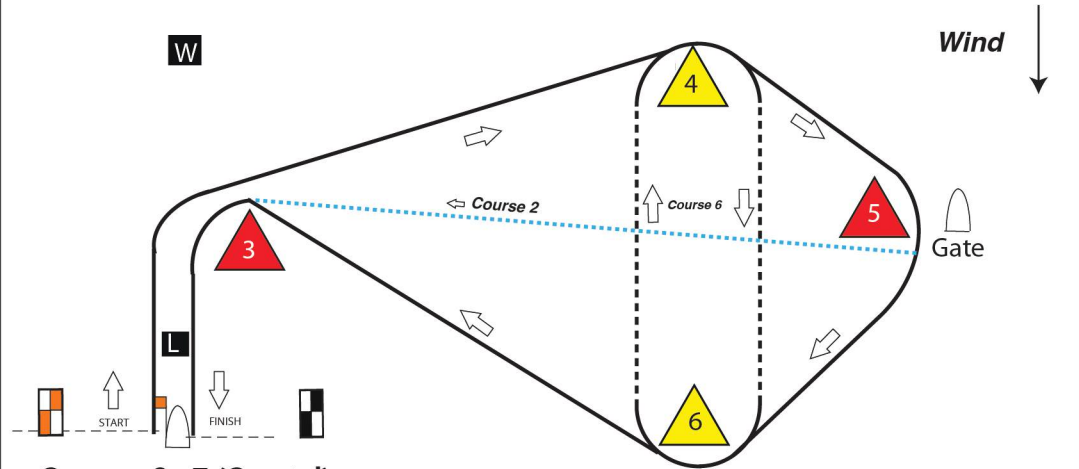
L



### Course 1

- i W, Finish
- ii W,L,W, Finish
- iii W,L,W,L,W,Finish
- iv 1,Finish
- v 1,L,1,Finish
- vi 1,L,1,2,L,1,Finish
- vii 1,2,Finish
- viii 1,2,L,1,2,Finish
- ix 1,2,L,1,L,1,2,Finish

All Marks Rounded to Port.



### Courses 2 - 7 (Coastal)

Direction of Marks (all courses):

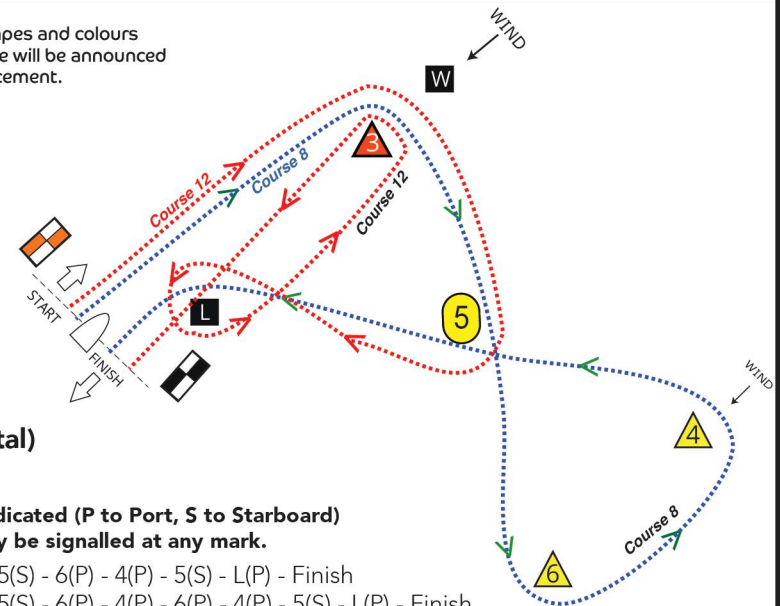
Pass through Gate with Committee Vessel to Starboard

Pass Marks as indicated (P to Port, S to Starboard)

- Course 2: Start - 3(S) - 4(S) - 5(Gate) - 3(P) - Finish
- Course 3: Start - 3(S) - 4(S) - 3(P) - Finish
- Course 4: Start - 3(S) - 4(S) - 6(S) - 3(P) - Finish
- Course 5: Start - 3(S) - 4(S) - 5(Gate) - 6(S) - 3(P) - Finish
- Course 6: Start - 3(S) - 4(S) - 5(Gate) - 6(S) - 4(S) - 6(S) - 3(P) - Finish
- Course 7: Start - 3(S) - 5(S) - Finish



A description of actual buoy shapes and colours used on an individual race course will be announced by VHF with the course announcement.



### Courses 8 - 12 (Coastal)

Direction of Marks (all courses):

Pass or Round Marks as indicated (P to Port, S to Starboard)

Note: Shorten Courses may be signalled at any mark.

- Course 8: Start - 3(S) - 5(S) - 6(P) - 4(P) - 5(S) - L(P) - Finish
- Course 9: Start - 3(S) - 5(S) - 6(P) - 4(P) - 6(P) - 4(P) - 5(S) - L(P) - Finish
- Course 10: Start - 3(S) - 5(S) - 6(P) - 5(S) - L(P) - Finish
- Course 11: Start - 3(S) - 5(S) - 6(P) - 4(P) - 5(S) - 3(P) - Finish
- Course 12: Start - 3(S) - 5(S) - Round L(P) - 3(P) - Finish

(Courses 8 and 12 are shown for illustration only)



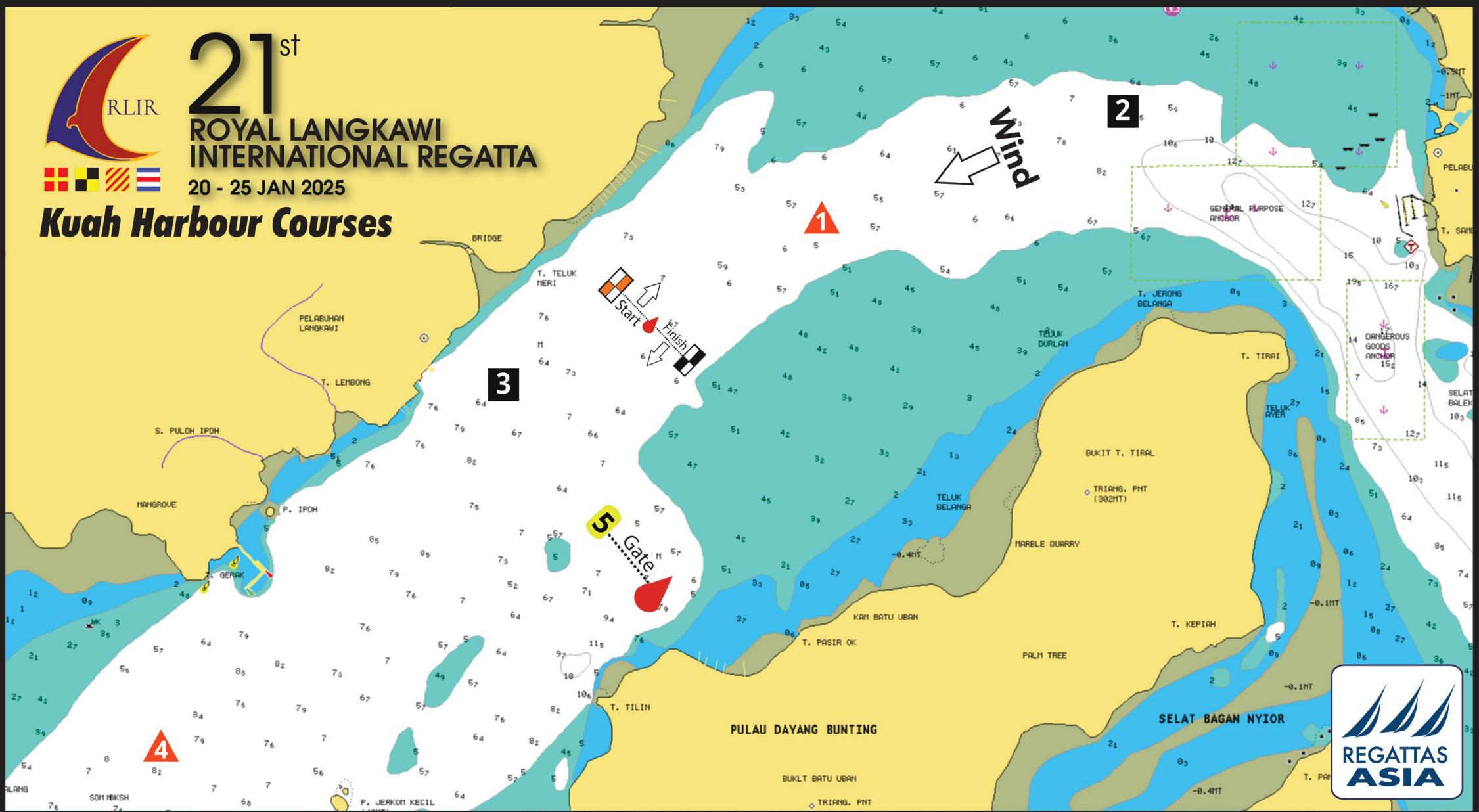


# 21<sup>st</sup> ROYAL LANGKAWI INTERNATIONAL REGATTA



20 - 25 JAN 2025

## Kuah Harbour Courses



- Course 14**  
Start, 1-p, 4-p, 3-p, 4-p, 5-g, 1-p, Finish
- Course 15**  
Start, 1-p, 4-p, 5-g, 1-p, Finish
- Course 16**  
Start, 4-p, 5-g, 1-p, Finish

- Course 17**  
Start, 1-p, 4-g, 5-g, 2-p, Finish
- Course 18**  
Start, 1-p, 3-p, 5-g, 1-p, Finish
- Course 19**  
Start, 2-p, 4-p, 3-p, 4-p, 2-p, Finish

**Course 20**  
Start, 2-p, 4-p, 2-p, Finish

A description of actual buoy shapes and colours used on an individual race course will be announced by VHF with the course announcement.

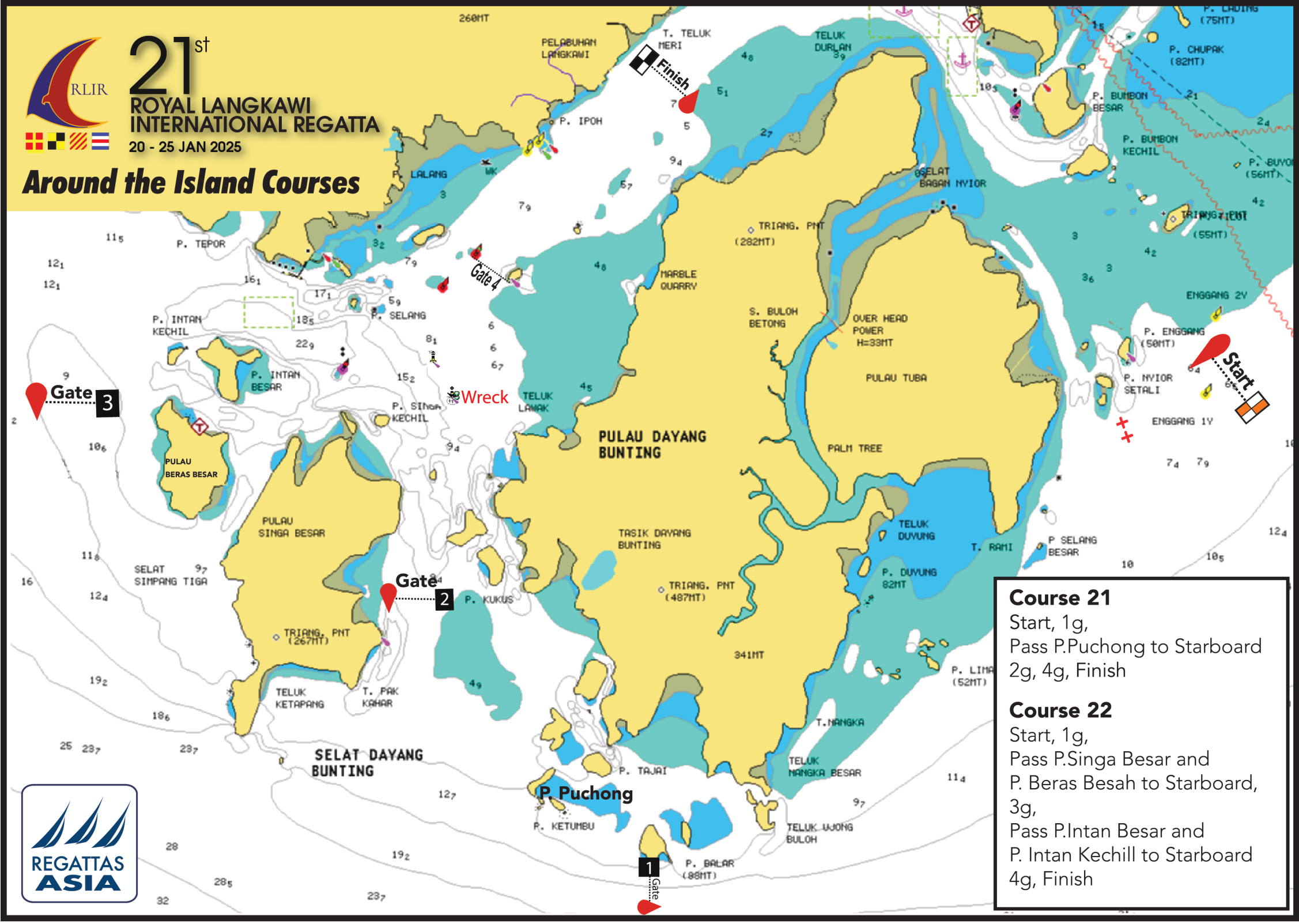
Note: Position of start, mark boat and mark buoys are in estimated positions for illustration only.



# 21<sup>st</sup> ROYAL LANGKAWI INTERNATIONAL REGATTA

20 - 25 JAN 2025

## Around the Island Courses



**Course 21**  
 Start, 1g,  
 Pass P.Puchong to Starboard  
 2g, 4g, Finish

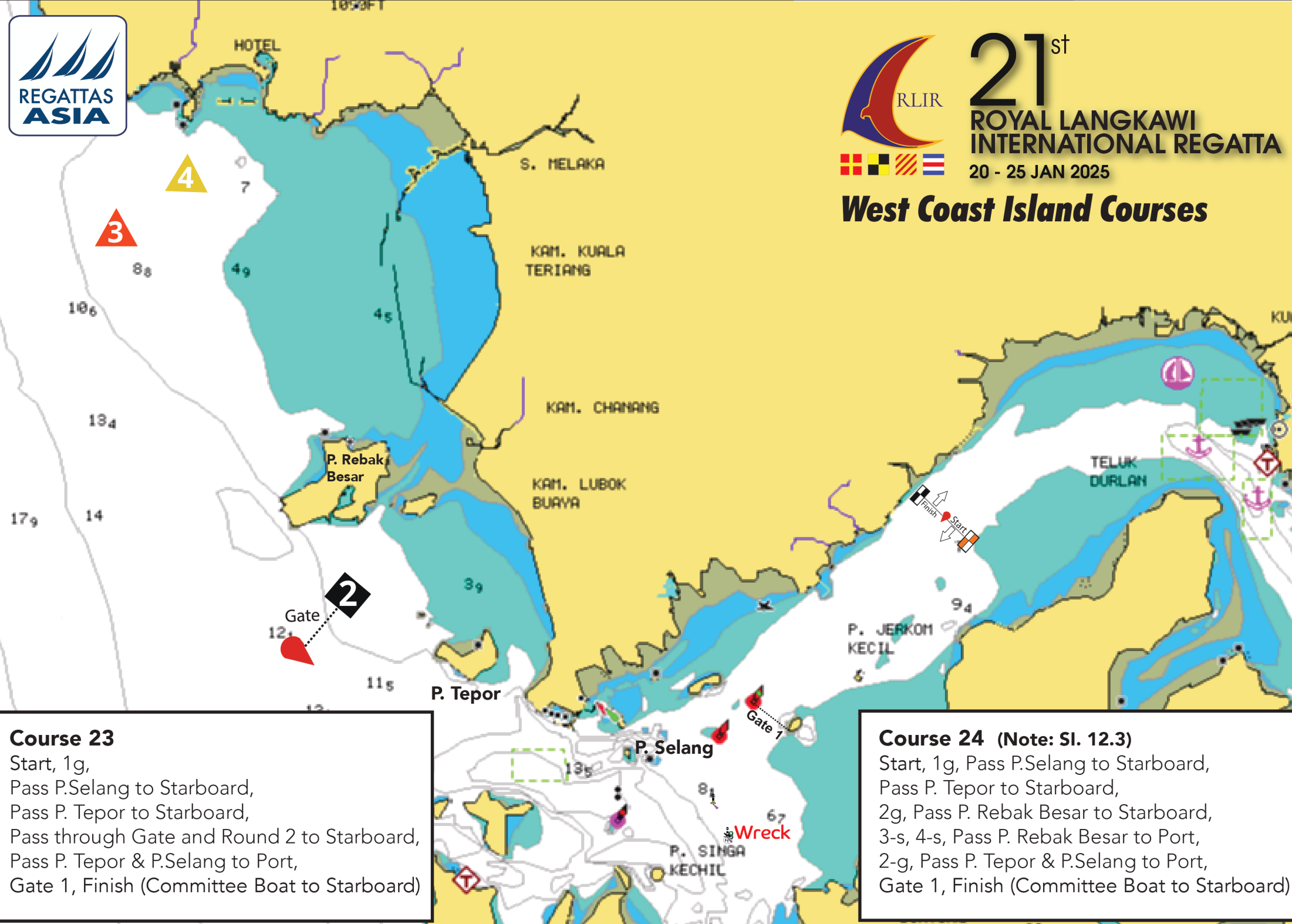
**Course 22**  
 Start, 1g,  
 Pass P.Singa Besar and  
 P. Beras Besah to Starboard,  
 3g,  
 Pass P.Intan Besar and  
 P. Intan Kechill to Starboard  
 4g, Finish





**21<sup>st</sup>**  
**ROYAL LANGKAWI**  
**INTERNATIONAL REGATTA**  
 20 - 25 JAN 2025

**West Coast Island Courses**



**Course 23**  
 Start, 1g,  
 Pass P.Selang to Starboard,  
 Pass P. Tepor to Starboard,  
 Pass through Gate and Round 2 to Starboard,  
 Pass P. Tepor & P.Selang to Port,  
 Gate 1, Finish (Committee Boat to Starboard)

**Course 24 (Note: SI. 12.3)**  
 Start, 1g, Pass P.Selang to Starboard,  
 Pass P. Tepor to Starboard,  
 2g, Pass P. Rebak Besar to Starboard,  
 3-s, 4-s, Pass P. Rebak Besar to Port,  
 2-g, Pass P. Tepor & P.Selang to Port,  
 Gate 1, Finish (Committee Boat to Starboard)



21<sup>st</sup>

ROYAL LANGKAWI  
INTERNATIONAL REGATTA

20 - 25 JAN 2025

## West Coast Island Course



**Course 25**  
Start,  
Through Gate 1,  
Pass P.Singa Kecil to Starboard  
Round P.Singa Besar to Starboard  
Pass P. Beras Besar to Starboard  
Round P. Intan Kecil to Starboard  
Pass P. Intan Besar to Starboard  
Pass P. Selang to Port  
Through Gate 1  
Finish





**21<sup>st</sup>**  
**ROYAL LANGKAWI**  
**INTERNATIONAL REGATTA**  
 20 - 25 JAN 2025

**West Coast Island Courses**

**Course 26 (Illustrated)**

Start, Gate 1,  
 Round P. Singha Kechil to Starboard,  
 Pass P. Intan Besar to Startboard ,  
 Round P. Intan Kechil to Starboard,  
 Pass P. Selang to Port,  
 Gate 1, Finish (Committee Boat to Starboard)

**Course 27 (Not Illustrated)**

Start, Gate 1,  
 Pass P. Intan Besar to Startboard ,  
 Round P. Intan Kechil to Starboard,  
 Pass P. Selang to Port, Gate 1,  
 Finish (Committee Boat to Starboard)

**Course 28 (Not Illustrated)**

Start, Gate 1,  
 Round P. Jong to Starboard  
 Round P. Singha Kechil to Starboard,  
 Pass P. Selang to Port, Gate 1,  
 Finish (Committee Boat to Starboard)

**Essential Co-ordinates**

P. Singa Kechil	N06' 13.90'	E99'44.90'
P. Jong	N06' 13.40'	E99'42.40'
P. Intan Besar	N06' 13.93'	E99'43.60'
P. Intan Kechil	N06' 14.60'	E99'42.80'
P. Selang (Reef)	N06' 14.90'	E99'44.90'
P. Jerkom Besar	N06' 15.42'	E99'46.29'
Jerkom 2 Buoy	N06' 15.64'	E99'45.88'
Wreck	N06' 14.20'	E99'45.61'





# 21<sup>st</sup> ROYAL LANGKAWI INTERNATIONAL REGATTA 20 - 25 JAN 2025

## ATTACHMENT C – GPS Location of Marks and Islands

### Courses 21 and 22

Depending on sea and wind conditions, the Start Vessel, Marks and Gates will be in the approximate vicinity of:

Start Boat	-	N06°14.7' - E99°53.4'
Gate 1	-	N06°09.1' - E99°47.9'
Gate 2	-	N06°12.0' - E99°45.2'
Gate 3	-	N06°14.5' - E99°42.5'
Gate 4	-	Pass between <b>Jerkom 2</b> N06°15.64' - E99°45.88' and <b>P.Jerkom Besar</b> N06°15.42' - E99°46.29'
Finish Boat	-	In a North East direction from Gate 4.

### Courses 23 - 28

Depending on sea and wind conditions, the Start Vessel, Marks and Gates will be in the approximate vicinity of:

Start/ Finish	-	N06°17.85' - E99°48.65'
Gate 1	-	Pass between <b>Jerkom 2</b> N06°15.64' - E99°45.88' and <b>P.Jerkom Besar</b> N06°15.42' - E99°46.29'
Gate 2	-	N06°16.80' - E99°41.40'
Mark 3	-	N06°20.05' - E99°38.80'
Mark 4	-	2 Nm upwind from Mark 3

If Mark 3 and 4 are used, Gate 2 will maintain position.

If a race committee vessel at 2-g displays flags black over red, DELETE marks 3 and 4 from Course Description, ROUND MARK 2 to STARBOARD and continue with course.

Essential Co-ordinates	
P. Singa Kechil	N06° 13.90' E99°44.90'
P. Jong	N06° 13.40' E99°42.40'
P. Intan Besar	N06° 13.93' E99°43.60'
P. Intan Kechil	N06° 14.60' E99°42.80'
P. Selang (Reef)	N06° 14.90' E99°44.90'
P. Jerkom Besar	N06° 15.42' E99°46.29'
Jerkom 2 Buoy	N06° 15.64' E99°45.88'
<b>Wreck</b>	<b>N06° 14.20' E99°45.61'</b>

### Reported Wrecks

Warning (SY Phocea) **06°14.20'N 099°45.61'E**  
A 75m, 4 mast mega yacht caught fire and sank in 8m at location "Wreck"  
Mast may still be visible above the water and is marked by East and West Cardinal Buoys marking its location.

Warning (Reported Wreck)  
**06°13.725'N 099°52.953'E**  
Unmarked Wreck - Superstructure visible above the water

The GPS details included in the course descriptions are provided using the **WGS84** datum.

These details are approximate and no request for redress will be considered for a minor deviation of position. This changes RRS 61.1.