

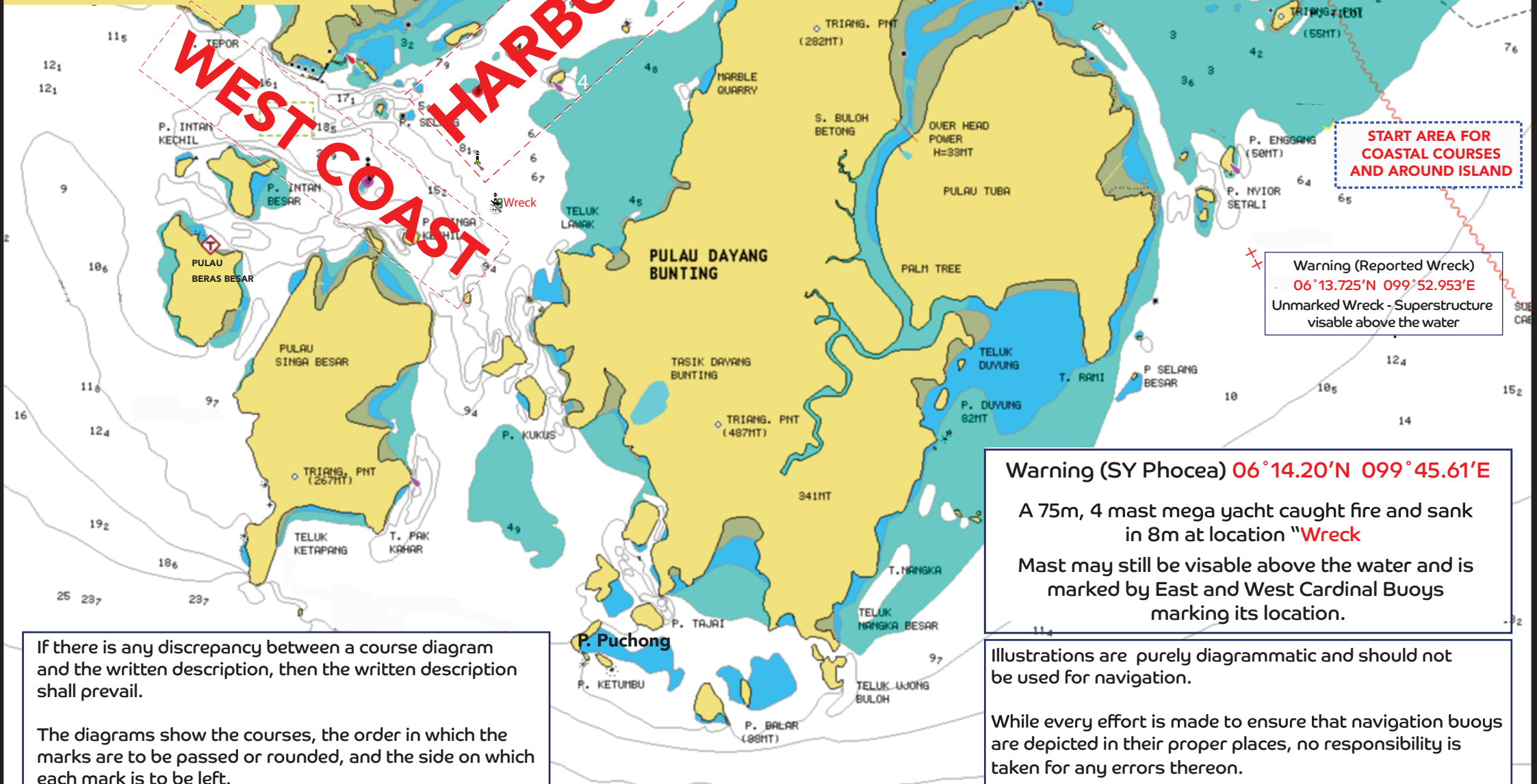


20th
ROYAL LANGKAWI
INTERNATIONAL REGATTA
 15 - 20 JAN 2024



Attachment B
Race Areas and Courses

WEST COAST HARBOUR RACES



START AREA FOR COASTAL AND AROUND ISLAND

Warning (Reported Wreck)
 06°13.725'N 099°52.953'E
 Unmarked Wreck - Superstructure visible above the water

Warning (SY Phocea) 06°14.20'N 099°45.61'E
 A 75m, 4 mast mega yacht caught fire and sank in 8m at location "Wreck"
 Mast may still be visible above the water and is marked by East and West Cardinal Buoys marking its location.

If there is any discrepancy between a course diagram and the written description, then the written description shall prevail.

The diagrams show the courses, the order in which the marks are to be passed or rounded, and the side on which each mark is to be left.

Illustrations are purely diagrammatic and should not be used for navigation.

While every effort is made to ensure that navigation buoys are depicted in their proper places, no responsibility is taken for any errors thereon.



20th
ROYAL LANGKAWI
INTERNATIONAL REGATTA
 15 - 20 JAN 2024

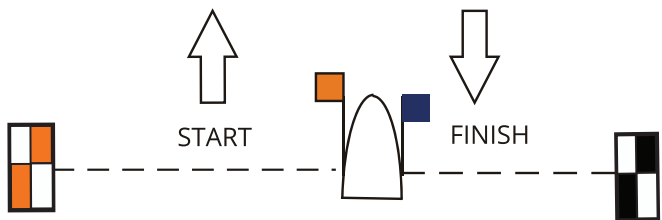
Windward/Leeward and Coastal Courses

S

W

1

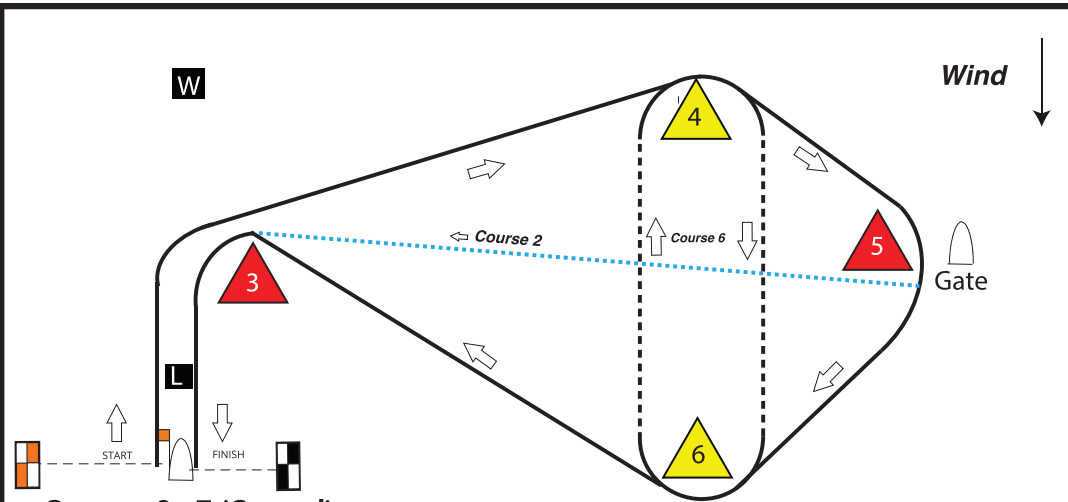
L



Course 1

- i W, Finish
- ii W,L,W, Finish
- iii W,L,W,L,W,Finish
- iv W,S, Finish
- v W,S,L,W,S, Finish
- vi W,S,L,W,S,L,W,S,Finish
- vii 1, Finish
- viii 1,L,1, Finish
- ix 1,L,1,L,1,Finish

All Marks Rounded to Port.



Courses 2 - 7 (Coastal)

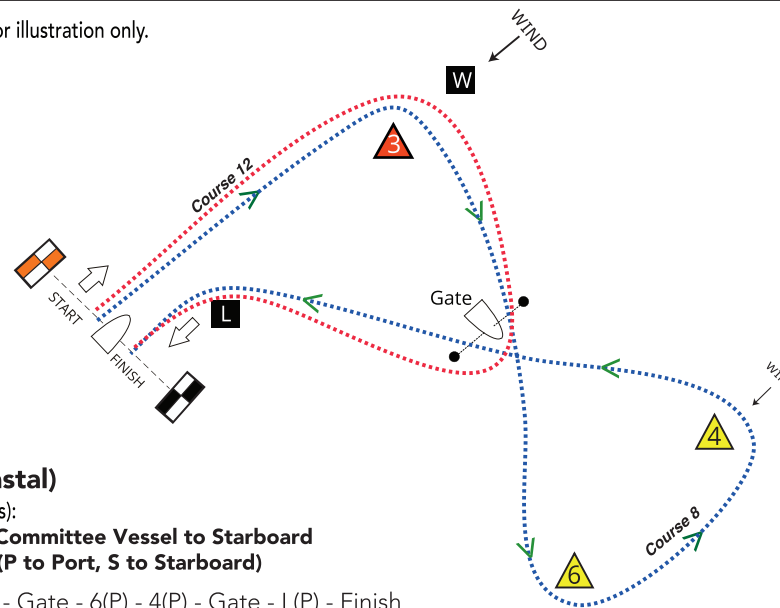
Direction of Marks (all courses):

Pass through Gate with Committee Vessel to Starboard
Pass Marks as indicated (P to Port, S to Starboard)

- Course 2: Start - 3(S) - 4(S) - 5(Gate) - 3(P) - Finish
- Course 3: Start - 3(S) - 4(S) - 3(P) - Finish
- Course 4: Start - 3(S) - 4(S) - 6(S) - 3(P) - Finish
- Course 5: Start - 3(S) - 4(S) - 5(Gate) - 6(S) - 3(P) - Finish
- Course 6: Start - 3(S) - 4(S) - 5(Gate) - 6(S) - 4(S) - 6(S) - 3(P) - Finish
- Course 7: Start - 3(S) - 5(S) - Finish



Courses 8 and 12 are shown for illustration only.



Courses 8 - 12 (Coastal)

Direction of Marks (all courses):

Pass through Gate with Committee Vessel to Starboard
Pass Marks as indicated (P to Port, S to Starboard)

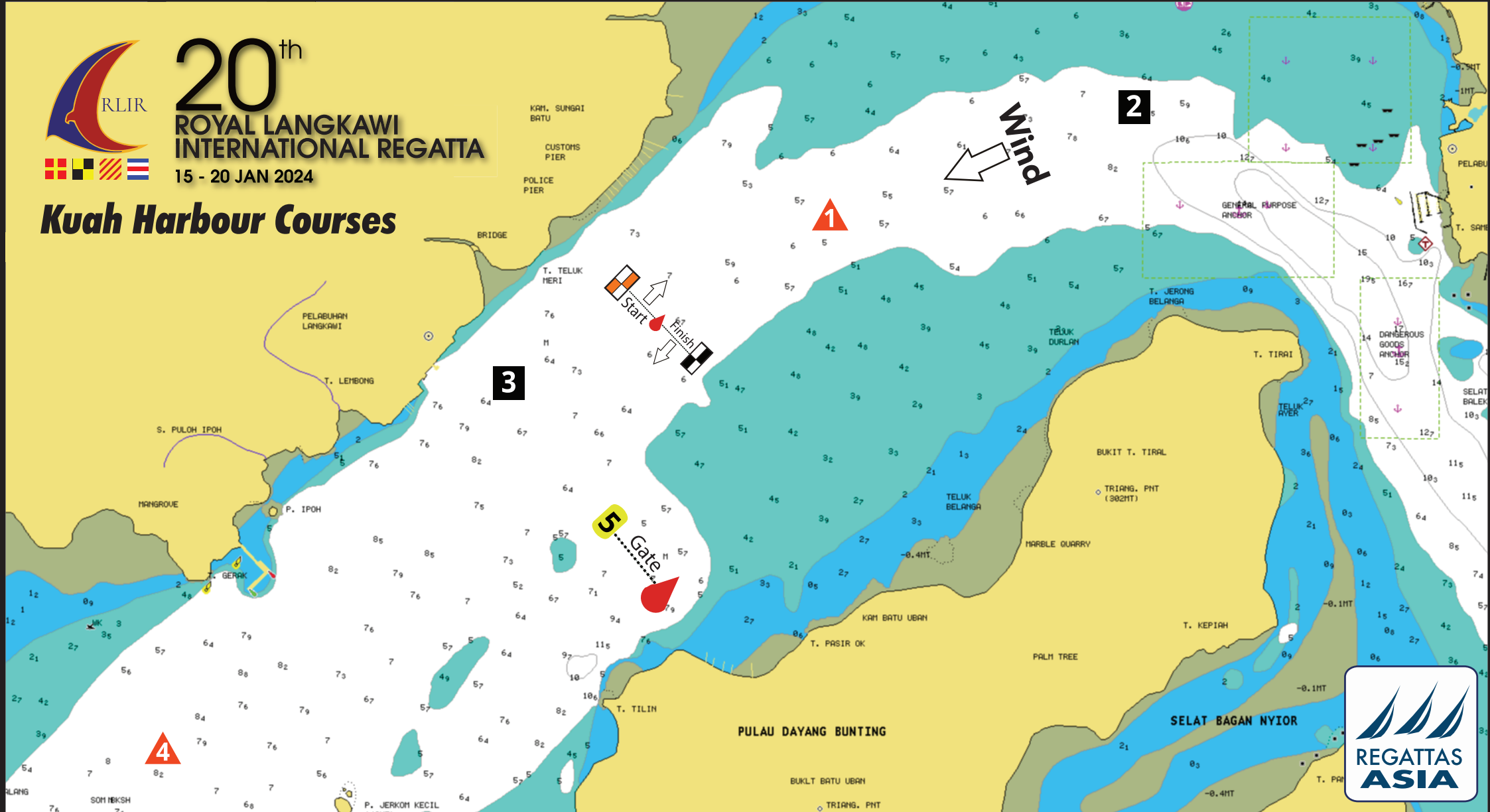
- Course 8: Start - 3(S) - Gate - 6(P) - 4(P) - Gate - L(P) - Finish
- Course 9: Start - 3(S) - Gate - 6(P) - 4(P) - 6(P) - 4(P) - Gate - L(P) - Finish
- Course 10: Start - 3(S) - Gate - 6(P) - Gate - L(P) - Finish
- Course 11: Start - 3(S) - Gate - 6(P) - 4(P) - Gate - 3(P) - Finish
- Course 12: Start - 3(S) - Gate and Round Committee Vessel to Starboard - L(P) - Finish





20th
ROYAL LANGKAWI
INTERNATIONAL REGATTA
15 - 20 JAN 2024

Kuah Harbour Courses



Course 14

Start, 1-p, 4-p, 3-p, 4-p, 5-g, 1-p, Finish

Course 15

Start, 1-p, 4-p, 5-g, 1-p, Finish

Course 16

Start, 4-p, 5-g, 1-p, Finish

Course 17

Start, 1-p, 4-g, 5-g, 2-p, Finish

Course 18

Start, 1-p, 3-p, 5-g, 1-p, Finish

Course 19

Start, 2-p, 4-p, 3-p, 4-p, 2-p, Finish

Course 20

Start, 2-p, 4-p, 2-p, Finish

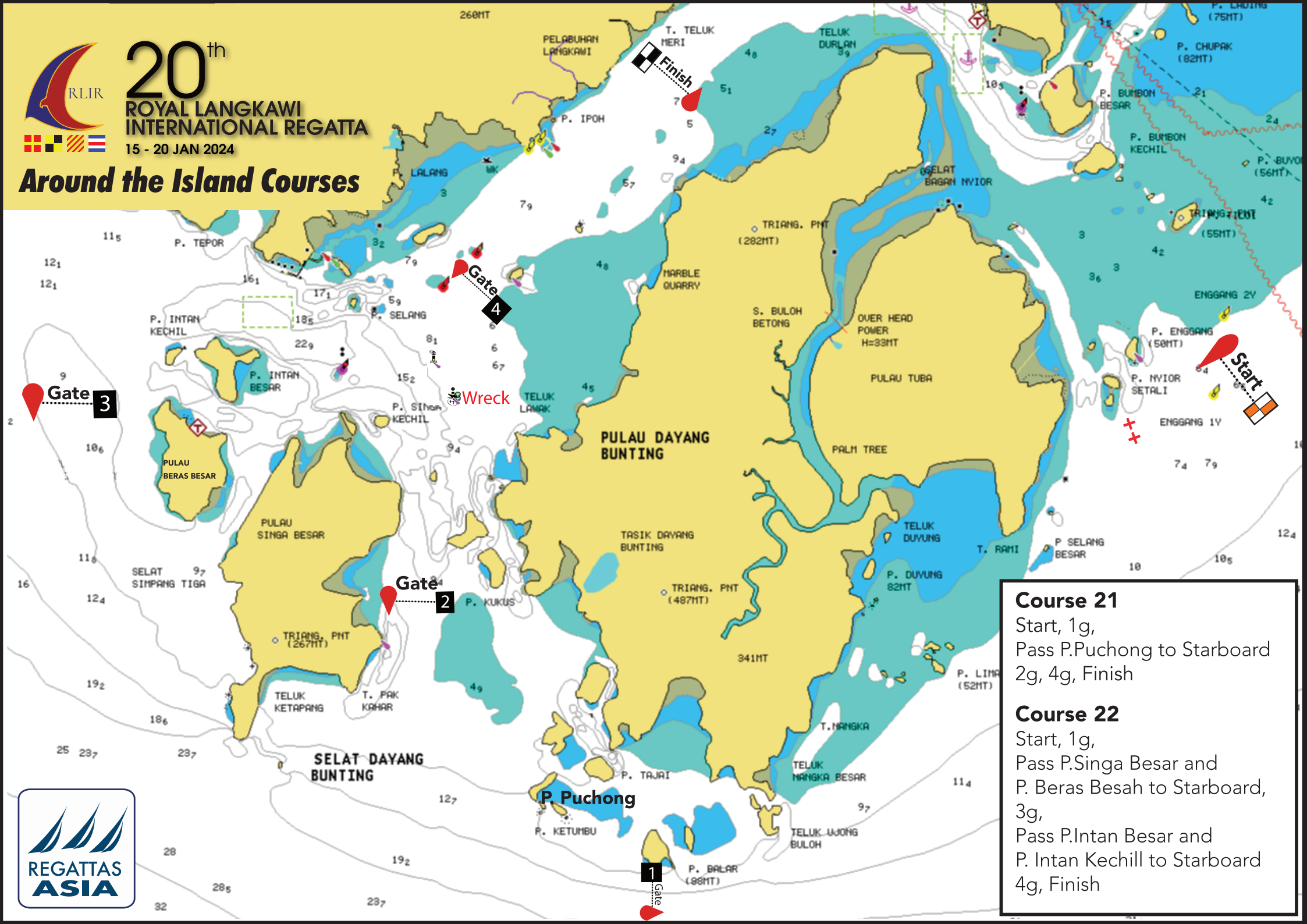
A description of actual buoy shapes and colours used on an individual race course will be announced by VHF with the course announcement.

Note: Position of start, mark boat and mark buoys are in estimated positions for illustration only.



20th
ROYAL LANGKAWI
INTERNATIONAL REGATTA
15 - 20 JAN 2024

Around the Island Courses



Course 21
Start, 1g,
Pass P.Puchong to Starboard
2g, 4g, Finish

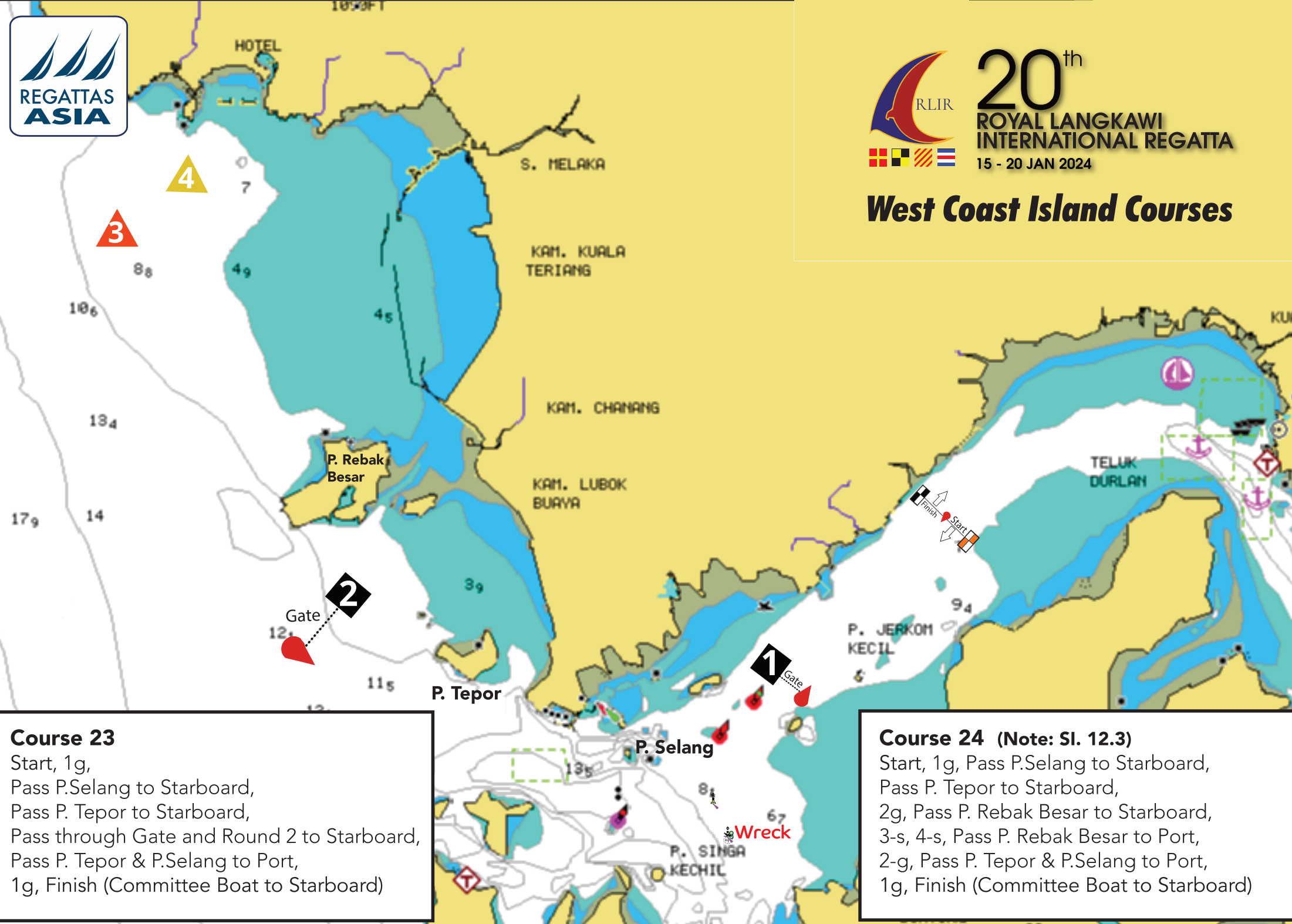
Course 22
Start, 1g,
Pass P.Singa Besar and
P. Beras Besah to Starboard,
3g,
Pass P.Intan Besar and
P. Intan Kechill to Starboard
4g, Finish





20th
ROYAL LANGKAWI
INTERNATIONAL REGATTA
15 - 20 JAN 2024

West Coast Island Courses



Course 23
Start, 1g,
Pass P.Selang to Starboard,
Pass P. Tepor to Starboard,
Pass through Gate and Round 2 to Starboard,
Pass P. Tepor & P.Selang to Port,
1g, Finish (Committee Boat to Starboard)

Course 24 (Note: SI. 12.3)
Start, 1g, Pass P.Selang to Starboard,
Pass P. Tepor to Starboard,
2g, Pass P. Rebak Besar to Starboard,
3-s, 4-s, Pass P. Rebak Besar to Port,
2-g, Pass P. Tepor & P.Selang to Port,
1g, Finish (Committee Boat to Starboard)



20th
ROYAL LANGKAWI
INTERNATIONAL REGATTA
15 - 20 JAN 2024

West Coast Island Course



Course 25
Start,
Through Gate 1,
Pass P.Singa Kechil to Starboard
Round P.Singa Besar to Starboard
Pass P. Beras Besar to Starboard
Round P. Intan Kechin to Starboard
Pass P. Intan Besar to Starboard
Pass P. Selang to Port
Through Gate 1
Finish





20th
ROYAL LANGKAWI
INTERNATIONAL REGATTA
 15 - 20 JAN 2024

West Coast Island Courses

Course 26 (Illustrated)

Start, 1(Gate),
 Round P. Singha Kechil to Starboard,
 Pass P. Intan Besar to Startboard ,
 Round P. Intan Kechil to Starboard,
 Pass P. Selang to Port,
 1(Gate), Finish (Committee Boat to Starboard)

Course 27 (Not Illustrated)

Start, 1(Gate),
 Pass P. Intan Besar to Startboard ,
 Round P. Intan Kechil to Starboard,
 Pass P. Selang to Port, 1(Gate),
 Finish (Committee Boat to Starboard)

Course 28 (Not Illustrated)

Start, 1(Gate),
 Round P. Jong to Starboard
 Round P. Singha Kechil to Starboard,
 Pass P. Selang to Port, 1(Gate),
 Finish (Committee Boat to Starboard)

Island Co-ordinates

P. Singa Kechil	N06' 13.90'	E99'44.90'
P. Jong	N06' 13.40'	E99'42.40'
P. Intan Besar	N06' 13.93'	E99'43.60'
P. Intan Kechil	N06' 14.60'	E99'42.80'
P. Selang (Reef)	N06' 14.90'	E99'44.90'
Wreck	N06' 14.20'	E99'45.61'





20th ROYAL LANGKAWI INTERNATIONAL REGATTA

15 - 20 JAN 2024

ATTACHMENT C – GPS Location of Marks and Islands

Courses 21 and 22

Depending on sea and wind conditions, the Start Vessel, Marks and Gates will be in the approximate vicinity of:

Start Boat	-	N06°14.7' - E99°53.4'
Gate 1	-	N06°09.1' - E99°47.9'
Gate 2	-	N06°12.0' - E99°45.2'
Gate 3	-	N06°14.5' - E99°42.5'
Gate 4	-	N06°15.3' - E99°45.9'
Finish Boat	-	In a North East direction from Gate 4.

Courses 23 - 28

Depending on sea and wind conditions, the Start Vessel, Marks and Gates will be in the approximate vicinity of:

Start/ Finish	-	N06°17.85' - E99°48.65'
Gate 1	-	N06°15.56' - E99°46.12'
Gate 2	-	N06°16.80' - E99°41.40'
Mark 3	-	N06°20.05' - E99°38.80'
Mark 4	-	2 Nm upwind from Mark 3

If Mark 3 and 4 are used, Gate 2 will maintain position.

If a race committee vessel at 2-g displays flags black over red, DELETE marks 3 and 4 from Course Description, ROUND MARK 2 to STARBOARD and continue with course.

Island Co-ordinates

P. Singa Kechil	N06' 13.90'	E99'44.90'
P. Jong	N06' 13.40'	E99'42.40'
P. Intan Besar	N06' 13.93'	E99'43.60'
P. Intan Kechil	N06' 14.60'	E99'42.80'
P. Selang (Reef)	N06' 14.90'	E99'44.90'

Reported Wrecks

Warning (SY Phocea) **06°14.20'N 099°45.61'E**
A 75m, 4 mast mega yacht caught fire and sank in 8m at location "Wreck"
Mast may still be visible above the water and is marked by East and West Cardinal Buoys marking its location.

Warning (Reported Wreck)
06°13.725'N 099°52.953'E
Unmarked Wreck - Superstructure visible above the water

*The GPS details included in the course descriptions are provided using the **WGS84** datum.*

These details are approximate and no request for redress will be considered for a minor deviation of position. This changes RRS 62.1.